

Fieldpiece

2025 CATALOG



About Us

Fieldpiece Instruments was incorporated June 1990 in the United States to develop tools specifically for HVACR professionals.

Fieldpiece focuses on making the job easier, faster and better for HVACR professionals. Our network of tools is designed to measure just about anything a technician would need to diagnose and repair HVACR systems.

Today, Fieldpiece is the HVACR industry's leading innovator of tool and test instruments. We continue to bring technicians the best tools possible in a changing landscape, including a full lineup of A2L compatible tools.

HVACR professionals trust Fieldpiece to have the right tools to help them do more. Every day.

Table of Contents

| | |
|------------------------------|--------------|
| Fieldpiece University | 2 - 3 |
|------------------------------|--------------|

| | |
|---------------------------|--------------|
| Refrigerant Charge | 4 - 9 |
|---------------------------|--------------|

| | |
|----------------|----------------|
| Airflow | 10 - 13 |
|----------------|----------------|

| | |
|-------------------|---------------|
| Electrical | 14- 23 |
|-------------------|---------------|

| | |
|------------------------------|----------------|
| Vacuum & Recovery | 24 - 29 |
|------------------------------|----------------|

| | |
|-----------------------------|----------------|
| Hoses & Fittings | 30 - 33 |
|-----------------------------|----------------|

| | |
|---------------------------------|----------------|
| Valve Core Removal Tools | 34 - 38 |
|---------------------------------|----------------|

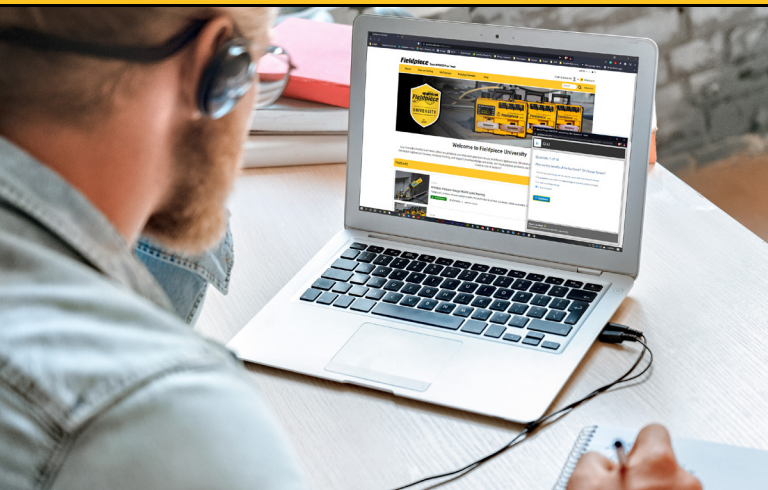
| | |
|-----------------------------------|----------------|
| Refrigerant Leak Detection | 38 - 41 |
|-----------------------------------|----------------|

| | |
|----------------|----------------|
| Heating | 42 - 47 |
|----------------|----------------|

| | |
|------------------------|----------------|
| Temperature/RH% | 48 - 51 |
|------------------------|----------------|

| | |
|--------------------|----------------|
| Accessories | 52 - 55 |
|--------------------|----------------|

| | |
|--------------|----------------|
| Index | 56 - 57 |
|--------------|----------------|



Keep Learning with Fieldpiece University

HVACR Techs:

- Training on specific applications and techniques.
- Extend your skills and knowledge about various industry topics.
- Video and interactive online training tools.
- Quizzes after the training to cement learnings.

Distributor Partners:

- Training that's focused on helping you find the right product for customers and technicians.
- Resources to help you build your business through a more knowledgeable sales staff.
- Video and interactive online training tools.
- Quizzes after the training to ensure your sales team learned what they need.

Note for Distributors: If you are part of a distributor organization or buying group that already uses its own online university on BlueVolt, then Fieldpiece sales training courses are already available to you there. Please check with your distributor organization or buying group to confirm.



**Class is in session.
Enroll now!**

**FIRST TIME
BlueVolt learners scan below.**



**CURRENT BLUEVOLT LEARNERS
Scan below to add Fieldpiece
University to your profile.**



Technicians



Distributors

REFRIGERANT CHARGE





LOW

HIGH

156.2 Psig
2.9 SH
54.8 VSAT

R410A
7.7 OODB
57.7 SLT
109.2 LLT

389.1 Psig
5.1 SC
1.143 LSAT

TARE SCALE

MENU
EXIT



N2 TEST
STOP/EXIT

AIR PARAMETER

LINK TOOL

PIPE/AIR

ZERO PRESSURE



SELECT
VAC ALARM



T1-T2 / TSH / OODB

Fieldpiece

SMAN® Refrigerant Manifold + Vacuum Gauge

VAC

REF

HIGH

800 PSI (55 BAR)

4000 PSI (275 BAR)

REFRIGERANT BARRIER HOSE

Refrigerant Charge

SM482V



Wireless SMAN® Refrigerant Manifold 4-port

- Wireless range of 1,000'
- Super rugged construction
- Temperature compensated system tightness test
- Job Link® System enabled
- Data logging
- Water resistant (IP55)



JL3KH6



Job Link® System Charge and Air Kit

- Wireless range of 1,000'
- Directly connects to mobile device with Job Link® System App
- Fast accurate temps with patented Rapid Rail® technology
- Pressure probe auto calibrates at any elevation
- Configurable psychrometers with flexible probe and sliding magnet



SM382V



Wireless SMAN® Refrigerant Manifold 3-port

- Wireless range of 1,000'
- Super rugged construction
- Temperature compensated system tightness test
- Job Link® System enabled
- Data logging
- Water resistant (IP55)



JL3KR4



Job Link® System Charge Kit

- Wireless range of 1,000'
- Directly connects to mobile device with Job Link® System App
- Fast accurate temps with patented Rapid Rail® technology
- Pressure probe auto calibrates at any elevation
- Great for critically charged systems
- Water resistant (IP54)



JL3PR



Job Link® System Pressure Probe

- Wireless range of 1,000'
- 45° angled fitting easily connects in tight spaces
- Pressure sensors are accurate at any elevation
- Great for critically charged systems
- Water resistant (IP54)



Job Link® System App

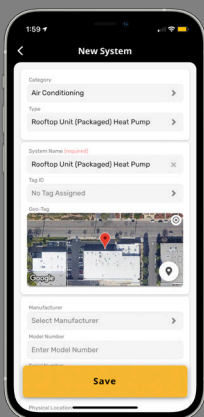
One system does it all - Job Link® System App

The Job Link® System works with all of our wireless tools—from pipe clamps to probes to digital manifolds, and integrates all of their functionality seamlessly. With the Job Link® System App, you'll see a real-time picture of an entire system.

Link Your Tools.

Connect a variety of tools with the most advanced wireless range, up to 1000 feet, to gather real-time system diagnostics across the entire jobsite.

- One-Time Connectivity to Wireless Tools.
- Measurements & Data on a Single Screen.



Link Your Jobs.

Featuring a work order management system, with geolocation tagging, that eliminates time spent searching for buried details.

- Search, Sort & Manage Jobs by Customer.
- Invoicing Simplified.
- Job Planning Made Easy.





Job Link® System Mobile App

There are three subscription tiers available, depending on your HVACR business needs. Visit fieldpiecejoblink.com to sign up today!

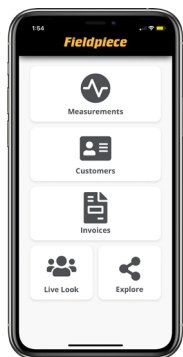
Job Link Free

- Live measurements
- Advanced calculations
- System diagnostics
- Free PDF reports

Job Link Pro

Everything in Job Link Free plus:

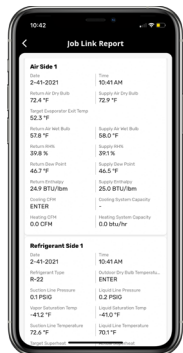
- Cloud storage
- Inspection checklists
- Photos and notes
- Customer and equipment history
- Build teams
- Live Look-in



Job Link Pro + Invoicing

Everything in Job Link Free and Job Link Pro plus:

- Professional invoicing
- Customizable parts and equipment
- Customizable hourly rates
- QuickBooks online integration



AIRFLOW





Airflow

JL3KM2



Job Link® System Dual Port Manometer Probe Kit

- 1000' Wireless range
- Precise placement with untethered design
- All-in-one static, gas and draft pressure
- Available as individual tool JL3MN



SDMN6

Dual Port Manometer w/ Pressure Switch Tester

- Gas, static, and differential pressure
- Test pressure switches
- Easily calibrate any adjustable pressure switch
- Great for diagnosing furnace performance
- Built in continuity tester



SDMN5

Dual Port Manometer

- Measure duct pressures to balance air flow
- Resolution down to 0.01"WC for static pressure measurement
- -60.0"WC to 60.0"WC range
- Includes two 5/16" adapters for measuring inlet and outlet pressures



STA2

Anemometer Hot Wire

- In-duct air balancing with fast response time
- Minimizes turbulence effect
- Hands free testing
- 38" telescoping probe in in-duct traversing
- Dual display shows combo of real-time CFM, air velocity, or temp



AAV3

Air Velocity and Temperature Accessory Head

- Measure velocity to calculate CFM
- Large vane covers most of register's free area
- Displays average measurement and real-time
- Works with Fieldpiece Stick Meters





ELECTRICAL



CAT.IV
600V
CAT.III
1000V

600A~
600A~
+

Fieldpiece

W OFF Hz 100AAC Hz 600AAC
VAC VAC VDC ADC
NCV Ω MFD Hz %
°F°C T1-T2 L1L2 L1L3

Wireless
ON/OFF

°F°C

ZERO ADC

Select

Range

H/M/m

SC680

AC 0.52 PF
0.553 kW

TRUE RMS JOB LINK METER
CAT III 1000V / CAT IV 600V

TYPE K MAX 30V

T1

TEMP

T2

COM

TEMP

+

L1

L2

L3

MAX 1000V

SC680



600A AC/DC Swivel Clamp Meter Dual Display - Power - LPF

- Wireless direct to Job Link® System for electrical documentation
- Measures Power (kW) for system efficiency
- Has True RMS and Low Pass Filter (LPF) to obtain accurate VFD readings
- DC Amps and Diode for mini-split inverters
- Dual temperature for delta T
- Molex test leads for small circuitry
- Test 3-phase with two leads
- Safety rated CAT IV – 600V/CAT III – 1000V



SC640

400A Swivel Clamp Meter Dual Display | Inrush

- Swivel-head with LED jaw flashlight
- Selector dial backlight
- Large backlit display
- Magnetic strap
- Lead storage





| Function | SC680 | SC640 |
|--|-------|-------|
| Volts AC/DC | ● | ● |
| Amps AC/DC | ● | |
| 600VAC/DC | ● | ● |
| 750VAC, 1000VDC | ● | |
| Power Factor | ● | |
| Low Pass Filter | ● | |
| Job Link® System | ● | |
| Dual Temp Delta T | ● | |
| Phase Rotation | ● | |
| True RMS | ● | ● |
| Inrush | ● | ● |
| Swivel Clamp | ● | ● |
| Magnetic Strap | ● | ● |
| Probe Storage | ● | ● |
| Dual Display | ● | ● |
| Temperature °F/ °C | ● | ● |
| Capacitance | ● | ● |
| Duty Cycle % | ● | ● |
| 400 AAC | ● | ● |
| 600 AAC/ADC | ● | |
| Microamps DC | ● | ● |
| Frequency via Leads/Clamp | ● | ● |
| Non Contact Voltage | ● | ● |
| 50 Mega Ohm with 0.1 Resolution | ● | ● |
| Continuity | ● | ● |
| Diode Test | ● | ● |
| Hold | ● | ● |
| Clamp Probe Holder | ● | ● |
| Dial Backlight | ● | ● |
| Clamp Jaw Light | ● | ● |
| LCD Backlight | ● | ● |
| Low Battery Indicator | ● | ● |
| Battery: 9V, 100 hrs | ● | ● |
| Compliance with UL 3rd Edition | ● | ● |
| CATIII 600VAC/DC | ● | ● |
| UL rated up to CATIII 1000VAC/DC and CATIV 600VAC/DC | ● | |

SC480



600A Clamp Meter Dual Display | Power

- Wireless direct to Job Link® System for electrical documentation
- Measures Power (kW) for system efficiency
- Has True RMS and Low Pass Filter (LPF) to obtain accurate VFD readings
- Molex test leads for small circuitry
- Test 3-phase with two leads
- Safety rated CAT IV – 600V/CAT III – 1000V



SC440

400A Clamp Meter Dual Display | Inrush

- Sturdy magnetic strap
- True RMS
- Inrush current
- Test-lead holder
- Magnetic Strap



SC260

400A Clamp Meter Compact

- True RMS
- Volts AC/DC
- Temperature
- Magnetic Hanger
- Bright backlight





| Function | SC480 | SC440 | SC260 |
|--|-------|-------|-------|
| Volts AC/DC | ● | ● | ● |
| Power Factor | ● | | |
| Low Pass Filter | ● | | |
| Job Link® System | ● | | |
| Phase Rotation | ● | | |
| True RMS | ● | ● | ● |
| Inrush | ● | ● | |
| Duty Cycle % | | ● | |
| 600VAC/DC | ● | ● | |
| 750VAC, 1000VDC | ● | | |
| 400 AAC | ● | ● | ● |
| 600 AAC | ● | | |
| Magnetic Strap | ● | ● | ● |
| Dual Display | ● | ● | |
| Temperature °F/ °C | ● | ● | ● |
| Capacitance | ● | ● | ● |
| Microamps DC | ● | ● | |
| Frequency via Leads/Clamp | ● | ● | |
| Non Contact Voltage | ● | ● | ● |
| 50 Mega Ohm with 0.1 Resolution | ● | ● | |
| Continuity | ● | ● | ● |
| Diode Test | ● | ● | ● |
| Hold | ● | ● | ● |
| Clamp Probe Holder | ● | ● | |
| Clamp Jaw Light | ● | ● | |
| LCD Backlight | ● | ● | ● |
| Low Battery Indicator | ● | ● | ● |
| Battery: 9V, 100 hrs | ● | ● | |
| Battery: 9V, 150 hrs | | | ● |
| Compliance with UL 3rd Edition | ● | ● | ● |
| CATIII 600VAC/DC | ● | ● | |
| UL rated up to CATIII 1000VAC/DC and CATIV 600VAC/DC | ● | | |

HS36

Stick Style Multimeter True RMS with Backlight

- Works with all accessory heads
- Non-contact voltage
- Microamps DC for flame diodes
- 400 AAC with included amp clamp
- Temperature up to 1000 F°
- Lead storage



HS33

Stick Style Multimeter Manual Ranging

- Works with any accessory head
- Non-contact voltage
- Microamps DC for flame diodes
- 400 AAC with included amp clamp
- Temperature up to 1000 F°
- Convenient lead storage
- Safe one-handed testing



ACH4

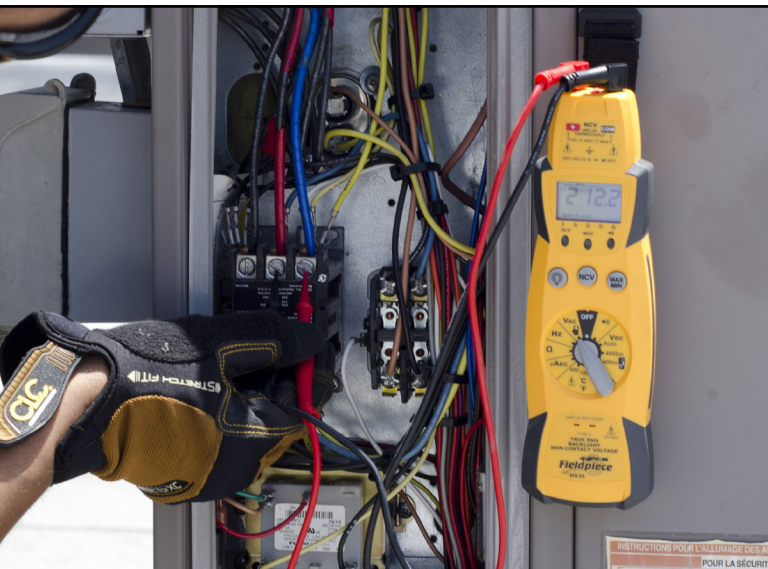
400A Amp Clamp Accessory Head

- Jaw claw helps isolate wires for testing
- Find run/start amps of motors and compressors
- Great partner for stick multimeters
- Angled jaw opens to 1.8"



| HS33 | HS36 | Function | Range | Accuracy /Resolution |
|---------|----------|----------------|---------|----------------------|
| Manual | Auto | Ranging | | |
| 2000 | 4000 | Counts | | |
| Average | True RMS | AC Conversion | | |
| | ● | Backlight | | |
| | ● | Bar Graph | | |
| | ● | VAC | 200m | 1.2% + 5/0.1m |
| | ● | | 2000m | 1.5% + 5/1m |
| | ● | | 40 | 1.5% + 5/0.01 |
| ● | ● | | 200 | 1.5% + 5/0.1m |
| ● | ● | | 600 | 2% + 5/1 |
| ● | ● | VDC | 200m | 0.5% + 2/0.1 m |
| ● | ● | | 2000m | 0.5% + 2/1m |
| | ● | | 20 | 0.5% + 2/0.01 |
| ● | ● | | 200 | 0.5% + 2/0.1 |
| | ● | | 600 | 0.5% + 2/1 |
| ● | ● | AAC | 20 | 2.7% + 7/0.1 |
| ● | ● | | 100 | 3.7% + 8/0.1 |
| ● | ● | | 400 | 5.0% + 10/1 |
| | ● | ADC | 400μ | 1% + 2/0.1 μ |
| | ● | | 4000μ | 1% + 2/1 μ |
| ● | ● | °F | 200° F | 1° F/0.1 |
| | ● | | 1000° F | 1° F/1 |
| ● | ● | MFD | 200 | 3% + 5/0.1m |
| ● | ● | Hi-V Indicator | | >30V |
| ● | ● | NCV | | >24VAC |
| ● | ● | Ohms | 200 | 1% + 4/0/1 |
| | ● | | 4K | 1% + 4/1 |
| | ● | | 40K | 1% + 4/10 |
| ● | ● | | 200K | 1% + 4/100 |
| | ● | | 4M | 1.5% + 4/1K |
| | ● | | 20M | 3% + 5/10K |
| ● | ● | Continuity | | |
| ● | | Diode | | |
| | ● | HZ | | |

● With ACH4 clamp head , ● LED and beeper , ● Range is 40XX, not 20XX
 Temperature accuracies shown are after simple field calibration



Electrical

LT17A

Digital Multimeter

- Temperature up to 1400 F°
- 400 AAC with included clamp
- Capacitance up to 200MFD
- Works with accessory heads
- Microamps for flame diode test
- Frequency for motor setup



SNCV1

Non-Contact Voltage Tester

- Detects live AC voltage without contact
- Bright LED and loud beeper
- Range: 24VAC to 440VAC
- Senses 24VAC for thermostat power



SMG5

Megohmmeter

- Helps predict compressor failure
- One handed testing
- Long probe tip for hard to reach terminals
- Bright backlight



ADA2**Dual Alligator Clips**

- Vinyl insulated cables
- 3.5 feet long

**ASLS2****Silicone Test Leads**

- High copper strands, silicone insulated test leads
- Basket style strain relief

**ADLS2****Deluxe Silicone Test Leads**

- High copper strands, silicone insulated test leads
- Basket style strain relief
- Removable probe tips

**ADK7****Deluxe Test Lead Kit**

- Silicone test leads
- Alligator clips
- Molex tips



VACUUM & RECOVERY





Vacuum & Recovery

VPX7



10 CFM Vacuum Pump

- 10 CFM flow rate with 15 microns ultimate vacuum
- ¾ HP DC motor
- Weighs 24 lbs. - Patented lightest weight
- RunQuick® Oil Change System offers on-the-fly oil changes in seconds
- Port Sizes: (1) 1/4", (2) 3/8", (1) 1/2"
- Small footprint – 1,346 cubic inches
- A2L Certified



VP87



8 CFM Vacuum Pump

- 8 CFM flow rate with 15 microns ultimate vacuum
- ¾ HP DC motor
- Weighs 27 lbs.
- RunQuick® Oil Change System offers on-the-fly oil changes in seconds
- Port Sizes: (1) 1/4", (2) 3/8", (1) 1/2"
- Small footprint – 1,346 cubic inches
- A2L Certified



VP67



6 CFM Vacuum Pump

- 6 CFM flow rate with 15 microns ultimate vacuum
- ½ HP AC motor
- Weighs 29 lbs.
- RunQuick® Oil Change System offers on-the-fly oil changes in seconds
- Port Sizes: (1) 1/4", (2) 3/8", (1) 1/2"
- Small footprint – 1,346 cubic inches
- A2L Certified



OIL8X3**3 Pack Vacuum Pump Oil**

- Three eight-ounce containers of vacuum pump oil
- Low vapor pressure ideal for pulling vacuums
- Wide temperature range helps oil perform in any conditions
- Highly refined for consistent performance
- Ensures proper sealing and lubrication
- Designed to work with our RunQuick® Oil Change System

**OIL32****Quart Vacuum Pump Oil**

- Quart-size container of vacuum pump oil
- Low vapor pressure ideal for pulling vacuums
- Wide temperature range helps oil perform in any conditions
- Highly refined for consistent performance
- Ensures proper sealing and lubrication
- Designed to work with our RunQuick® Oil Change System

**OIL128****Gallon Vacuum Pump Oil**

- Gallon-size container of vacuum pump oil
- Low vapor pressure ideal for pulling vacuums
- Wide temperature range helps oil perform in any conditions
- Highly refined for consistent performance
- Ensures proper sealing and lubrication
- Designed to work with our RunQuick® Oil Change System



Vacuum & Recovery

MG44



Wireless Vacuum Gauge

- Confidently perform evacuations with a reliable, leak-proof seal
- Reversible angled coupler and new cylindrical design are easier to fit into tight spaces
- There are three ways to use: 1) Directly from the MG44's display, 2) up to 1000' away via the Job Link® mobile app, or 3) on the Fieldpiece SMAN® Refrigerant Manifold
- Three ways to view: New larger backlit LCD screen is easier to read and its dot-matrix display shows more info including 1) rate, 2) bar graph, and 3) rate meter
- IP54-rated weather-resistant



SR47



Wireless Refrigerant Scale

- 13" platform to fit larger tanks
- Max load 252 lbs (114 kg)
- Water resistant
- 200 hour platform battery life
- Long range wireless
- Connect to Job Link® System Mobile App
- Integrated bumpers for increased durability



SRS1

Refrigerant Scale

- Charging & recovery weight alarms
- Easy to carry
- 0.25 oz (0.01 kg) resolution
- Maximum load: 110 lbs (50kg)
- Accuracy: $\pm(0.05\%rdg + 10g)$
- Water resistant



MR45



Digital Recovery Machine

- DC Motor: 1 HP (variable smart speed)
- Starts and runs easily with lower voltage
- Minimizes liquid slugging and maximizes vapor recovery
- 3 selectable auto stop levels
- Easy access ports
- A2L Compatible



S365

Charging Jacket for TXV Systems

- Charge from 37-70°F outside temperatures
- Service maintenance contracts before and after summer heat
- Extend billable hours
- Easy to adjust to reach correct pressure differential
- Looks professional



HOSES & FITTINGS





REF

VAC

REFRIGERANT BARRIER HOSE


Fieldpiece

Hoses and Fittings

Charging Hoses and Hose Sets

- Rugged Full-Ring Triple Crimp
- Customizable Hose Color Tags
- 4-Layer Construction




|  A2L | 1/4" Charging Hose Set (3) | 1/4" Charging Hose | 5/16" Charging Hose Set (3)* | 5/16" Charging Hose |
|---|----------------------------|--------------------|------------------------------|---------------------|
| Ball Valves | HR3B | HR1B | HR3BM | HR1BM |
| Low Loss Valves | HR3L | HR1L | HR3CM | HR1LM |
| Open Fittings | HR3 | HR1 | | |
| Ball Valve (1) Low Loss Valves (2) | HR3C | | | |

*5/16" Charging Hose Set comes with (2) 5/16" hoses, with stated valve type, and (1) 1/4" Ball Valve Hose. (3) hoses total.

Vacuum Hoses

- Rugged Full-Ring Triple Crimp
- 3/8" I.D. for Rapid Evacuation
- 4-Layer Construction




|  A2L | 3/8" x 3/8" Fittings | 3/8" x 1/4" Fittings |
|---|----------------------|----------------------|
| 3/8" Vacuum Hose | HV1 | HV1S |

Hose Extensions

- Rugged Full-Ring Triple Crimp
- Customizable Hose Color Tags
- 4-Layer Construction



|  A2L | 1/4" Ball Valve | 1/4" Open | 1/4" A2L Adapter |
|---|-----------------|-----------|------------------|
| Hose Extensions | HR3XB | HR3X | HR1XR |

RHCM



5/16" to 1/4" Straight Adapter

- Durable, Machined Brass with Valve Core



RHCM45



5/16" to 1/4" Angled Adapter

- Durable, Machined Brass with Valve Core



RHG12



Hose Gaskets + Depressors

- (8) 1/4" Threaded Core Depressors
- (8) 1/4" Gaskets
- (4) 3/8" Gaskets



HCT6



Spare Color Tag Set

- Quantity = 6
- 2 Red, 2 Yellow and 2 Blue



VALVE CORE REMOVAL TOOLS





Valve Core Removal Tools

VC2G



Dual Valve VCRT with Sight Glass

- Swappable service port fitting
- Sight glass to verify captured valve core
- Second ball valve protects your vacuum gauge
- Magnetic comfort spinner
- Vacuum-rated to 20 microns



VC1G



Single Valve VCRT with Sight Glass

- Swappable service port fitting
- Sight glass to verify captured valve core
- Magnetic comfort spinner
- Vacuum-rated to 20 microns



VC1



Compact Single VCRT

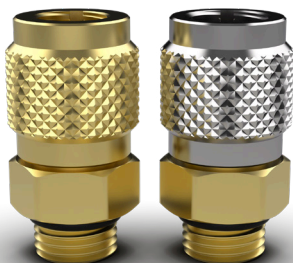
- Swappable service port fitting
- Compact size for tight space access
- Magnetic capture rod knob
- Vacuum-rated to 20 microns



RVC4 | RVC5

Swappable Port Fittings

- Easily convert your VC2G, VC1G, or VC1 between 1/4" and 5/16"
- Includes 5 spare o-rings & storage tube
- 1/4" Replacement Fitting (RVC4)
- 5/16" Replacement Fitting (RVC5)

**RVC4****RVC5****RVCG10**

Replacement VCRT Fitting Gaskets

- VCRT Fitting Gaskets, Qty 10



REFRIGERANT LEAK DETECTION





H



0.00
AZERO



ZERO
MANUAL/AUTO

PRESS BOTH TO MUTE
SENSITIVITY
MAX ON/OFF

Fieldpiece

IR Refrigerant
Leak Detector

DR82

Refrigerant Leak Detection

DRX3



✓ A3/A2L

A3/A2L/A1 Refrigerant and Heating Gas Leak Detector

- One sensor detects HC, HFC, CFC, HCFC, HFO, H2/N2 (Tracer Gas), blend refrigerants, and natural gas, propane, butane, methane heating fuels
- Field-replaceable heated diode sensor
- 60-hour life on replaceable batteries
- Sensitivity to 0.03 oz/yr (1g/yr)
- Large backlit easy-to-read LCD display
- Leak intensity feedback: flashing LED, beeps, LCD display, and Job Link® System app



DR82

Infrared Refrigerant Leak Detector

- Detects all HFC, CFC, HCFC, HFO and blends
- State-of-the-art infrared sensor with 10-year life
- Doesn't trigger on soap bubbles and oil
- 10-hour USB rechargeable lithium-ion battery
- Sensitivity to 0.03 oz/yr (1g/yr)
- Large backlit easy-to-read LCD display
- Leak intensity feedback: Flashing LED, beeps, and LCD display

**DR58**

Heated Diode Refrigerant Leak Detector

- Detects all HFC, CFC, HCFC, HFO, H2/N2 (Tracer Gas) and blends
- Field-replaceable heated diode sensor
- 18-hour USB rechargeable lithium-ion battery
- Sensitivity to 0.03 oz/yr (1g/yr)
- Large backlit easy-to-read LCD display
- Leak intensity feedback: Flashing LED, beeps, and LCD display

**RFT6**

Replacement Filter Tips for DR58 and DR82

- Set of 5 filter tips and gaskets
- Hydrophobic filter keeps out water and dust
- Easy to replace in the field, simply unscrew the tip to remove





HEATING

2021-08-12

01:37:15

11

JOB MENU

SAVE ALL

COMBUSTION



242.0 °F
STACK
DRY BULB

20.9 %
OXYGEN

0 PPM
CO

0 PPM
CO
AIR FREE

NATURAL GAS - ATMOSPHERIC

0.0 %
CO2

-0.08 inWC
DRAFT

--- %
EA

0.0 %
EFF



STOP PUMP

ZERO PROBE



SENSOR
ACCESS



Fieldpiece®

CAT45 Combustion Analyzer

SENSOR
ACCESS



Heating

CAT45

CAT45K2

Job
Link

Combustion Analyzer

- Accurately measure O_2 , CO , CO_2 , draft pressure
- Four-year sensor warranty
- Large 5.5" touchscreen display
- Field-replaceable sensors
- SensorVault™ Technology
- Connect with Job Link® System App, industry-leading 1000' wireless range
- Can be sold as a kit with a printer (CAT45K2)



CAT85

CAT85K2

Job
Link

Combustion Analyzer HC

- Accurately measure O_2 , CO , CO_2 , live draft pressure
- Built-in dual-port manometer
- SensorVault™ Technology
- HydroCycle™ Pump Technology
- Four-year sensor warranty
- Large 5.5" touchscreen display
- Connect with Job Link® System App, industry-leading 1000' wireless range
- Can be sold as a kit with a printer (CAT85K2)



CATPR

Wireless Thermal Printer

- Compatible with Fieldpiece combustion analyzers
- Compact and portable
- Easy operation, drop-in paper loading
- Rechargeable lithium battery



SCM4

Carbon Monoxide Detector

- Field-replaceable CO sensor
- Calibrate to ambient quickly with the ZERO button
- Audio/visual alarms with mute
- Fast electro-chemical sensor
- Magnetic hanger for hands free



SOX3

Combustion Checker with Auto Pump

- Measures flue temp and %O₂
- Calculates %CO₂, %EA, and combustion efficiency
- Hands-free testing with magnet, R-cone, and automatic pump
- Programmable for custom fuel types



SDMN6

Dual Port Manometer w/ Pressure Switch Tester

- Gas, static, and differential pressure
- Test pressure switches
- Easily calibrate any adjustable pressure switch
- Great for diagnosing furnace performance
- Built in continuity tester



**TEMPERATURE/
RH%**





Rapid Rail™ Sensor

Temperature/RH%

JL3RH



Job Link® System Flex Psychrometer Probe

- Powerful 1000' wireless range direct to Job Link App on mobile device
- Communicates with Job Link App and Wireless Manifolds (SM380V/SM480V)
- Strong magnetic hanger
- Supply and return side switch



SRH3

Psychrometer Telescoping Wand

- In-duct target superheat & target evaporator exit temp
- Wet bulb, temps, dew point, and %RH
- Hands free testing
- 38" telescoping probe
- Quickly takes readings from the center of the duct



PRH2

Digital Pocket Psychrometer

- Wet bulb, dry bulb, dew point, %RH
- Quick walk-around measurements
- Easy in duct readings
- Helps calculate target superheat



ST4

Dual Temperature Meter Type K

- Two Type-K thermocouples included
- Accepts any Type-K thermocouple
- Resolution of 0.1 degree F
- Separate MIN/MAX and HOLD buttons
- Easy field calibration



SIG1**Gun Style IR Thermometer with Laser**

- Accurate surface temperatures
- 10:1 field of view
- Select °F or °C
- Range: -22°F to 1022°F

**SPK1****Pocket Knife Style Thermometer**

- Detent holds rod in 16 positions
- Temperature range: -58°F to 392°F
- Stainless Steel
- Max/min/hold

**SPK2****In-duct Thermometer**

- Quick and easy in-duct measurements
- Temperature range: -58°F to 392°F
- Hanging hook
- Bright backlight

**SPK3****Thermometer – Compact Type K - Infrared**

- Convenient 2-Way Temp | Rod/IR
- 8:1 IR
- Hands free in-duct temps
- Quick T1-T2 calculations
- Max/min/hold



TC48

Large Pipe Clamp

- Jaw range between 3/4" to 4 1/8"
- Extremely accurate and quick
- Patented Rapid Rail® Sensor
- Single-hand operation
- Compact design



JL3PC



Job Link® System Premium Pipe Clamp Probe

- Jaw range between 1/4" to 1 3/8"
- Powerful 1000' wireless range
- Stabilizes in 3 seconds with +/- 1° F accuracy
- Patented Rapid Rail® Sensor
- Water resistant (IP54)



TC24

Pipe Clamp Thermocouple

- Works on pipes between 3/8" and 1 3/8"
- Ideal for residential and light commercial cooling systems
- Accuracy: $\pm 1^{\circ}\text{F}$ (0.5°C) after field calibration (meets California's Title 24 specifications)



ATC1R

Small Clamp Thermocouple

- Works on pipes between 1/8" to 3/4"
 - Accuracy: +/- 4°F (2°C) ; $\pm 1^{\circ}\text{F}$ (0.5°C) after field calibration, 32 to 176°F (0 to 80°C)
- Temperature range: -50 to 257°F
(-46 to 125°C)



JL3LC

Job
Link

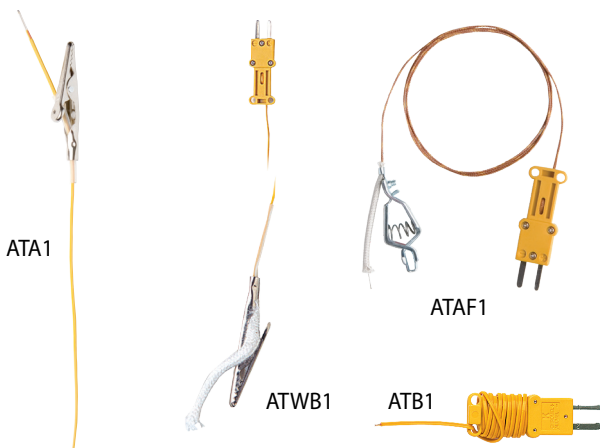
Job Link® System Large Pipe Clamp

- Jaw range between 3/4" to 4 1/8"
- Extremely accurate and quick
- Patented Rapid Rail® Sensor
- Works wirelessly up to 1,000'
- Water resistant (IP65)



Fieldpiece Thermocouples

All Fieldpiece thermocouples work with Fieldpiece meters that take temperature.



| Model | Description | MAX° F PROBE TEMP |
|-------|----------------------------------|-------------------|
| ATAI | Bead type with alligator | 400 |
| ATWBI | Wet bulb (sock) with alligator | 200 |
| ATAFI | HI-temp bead type with alligator | 900 |
| ATBI | Bead type standard | 400 |

ACCESSORIES





Accessories

BG36

Inspection Tool Bag

- Quick locking magnetic closure
- Isolated pockets for test instruments
- Weather protected sturdy base
- Compact rugged design



PLM2

Lighted Mirror Tool

- Adjusts in any direction
- LED light
- Detach the mirror to use as flashlight



BG44

Service Tool Bag

- Rugged, elevated rack for hand tools
- Padded pockets to protect meters
- Magnetic tray
- Quick carry single strap
- Compact rugged design



Index

| Product | | Pages |
|---------|---|-------|
| AAV3 | Air Velocity and Temperature | 13 |
| ACH4 | Current Clamp | 20 |
| ADA2 | Dual Alligator Clips | 23 |
| ADK7 | Deluxe Test Lead Kit | 23 |
| ADLS2 | Deluxe Silicone Test Leads | 23 |
| ASLS2 | Silicone Test Leads | 23 |
| ATA1 | T/C-Bead with Clip | 51 |
| ATAF1 | T/C-HiTemp with Clip | 51 |
| ATB1 | T/C-Bead | 51 |
| ATC1R | T/C-Clamp (1/8 - 3/4") | 51 |
| ATWB1 | T/C-Wet Bulb with Clip | 51 |
| BG36 | Inspection Tool Bag | 54 |
| BG44 | Service Tool Bag | 55 |
| CAT45 | Combustion Analyzer | 44 |
| CAT85 | Combustion Analyzer HC | 44 |
| CATPR | Wireless Thermal Printer | 44 |
| DR58 | Heated Diode Refrigerant Leak Detector | 41 |
| DR82 | Infrared Refrigerant Leak Detector | 41 |
| DRX3 | A3/A2L/A1 Refrigerant and Heating Gas Leak Detector | 40 |
| Hoses | Hoses and Fittings | 32 |
| HS33 | Stick Meter | 20 |
| HS36 | Stick Meter | 20 |
| JL3KH6 | Job Link® System Charge and Air Kit | 06 |
| JL3KM2 | Job Link® System Dual Port Manometer Probe Kit | 12 |
| JL3KR4 | Job Link® System Charge Kit | 07 |
| JL3LC | Job Link® System Large Pipe Clamp | 47 |
| JL3MN | Job Link® System Single Port Manometer Probe | 12 |
| JL3PC | Job Link® System Premium Pipe Clamp Probe | 50 |
| JL3PR | Job Link® System Pressure Probe | 07 |
| JL3RH | Job Link® System Flex Psychrometer Probe | 48 |
| LT17A | Digital Multimeter | 22 |
| MG44 | Wireless Vacuum Gauge | 28 |
| MR45 | Recovery Machine | 29 |
| PLM2 | Lighted Mirror Tool | 54 |
| PRH2 | Digital Pocket Psychrometer | 48 |
| RFT6 | Leak Detector Replaceable Filter Tips | 41 |
| RVC4 | 1/4" Replacement Fitting | 37 |
| RVC5 | 5/16" Replacement Fitting | 37 |
| RVCG10 | Replacement VCRT Fitting Gaskets | 37 |
| S365 | Charging Jacket | 29 |

| Product | | Pages |
|---------|--|-------|
| SC260 | Compact Clamp Meter | 18 |
| SC440 | Essential Clamp Meter | 18 |
| SC480 | Wireless Power Clamp Meter | 18 |
| SC640 | Loaded Clamp Meter | 16 |
| SC680 | Wireless Power Clamp Meter | 16 |
| SCM4 | Carbon Monoxide Detector | 45 |
| SDMN5 | Dual Port Manometer | 12 |
| SDMN6 | Dual Port Manometer and Pressure Switch Tester | 12 |
| SIG1 | Gun Style IR Thermometer with Laser | 49 |
| SM382V | 3 Port Digital Manifold | 07 |
| SM482V | 4 Port Digital Manifold | 06 |
| SMG5 | Megohmmeter | 22 |
| SNCV1 | Non-contact Voltage Tester | 22 |
| SOX3 | Combustion Check with Automatic Pump | 45 |
| SPK1 | Compact In-Duct Thermometer | 49 |
| SPK2 | In-Duct Thermometer | 49 |
| SPK3 | Rod and IR Temperatures | 49 |
| SRS1 | Wired Refrigerant Scale | 28 |
| SR47 | Wireless Refrigerant Scale | 28 |
| ST4 | Dual Temperature Thermometer | 48 |
| STA2 | In Duct Hot-wire Anemometer | 13 |
| TC24 | Pipe Clamp Thermocouple | 50 |
| TC48 | Large Pipe Clamp Thermocouple | 50 |
| VC1 | Compact Single Valve Core Removal Tool | 36 |
| VC1G | Single Valve VCRT with Sight Glass | 36 |
| VC2G | Dual Valve VCRT with Sight Glass | 36 |
| VP67 | 6 CFM Vacuum Pump | 26 |
| VP87 | 8 CFM Vacuum Pump | 26 |
| VPX7 | 10 CFM Vacuum Pump | 26 |
| VP-OIL | Vacuum Pump Oil | 27 |



© 2025 Fieldpiece Instruments, Inc. All rights reserved.

Fieldpiece Instruments, Inc.
1636 West Collins Ave
Orange, CA 92867
(714) 634-1844



2025.Q2v02